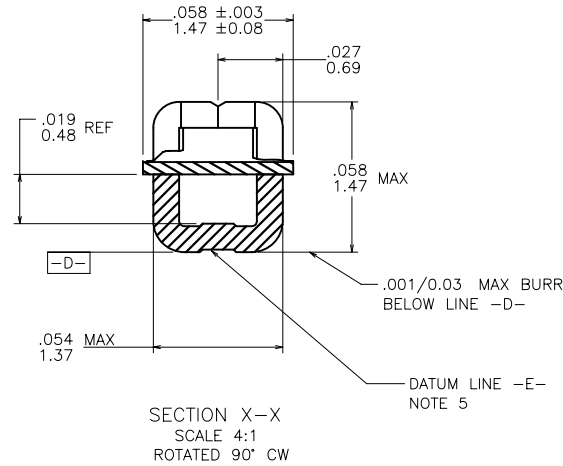
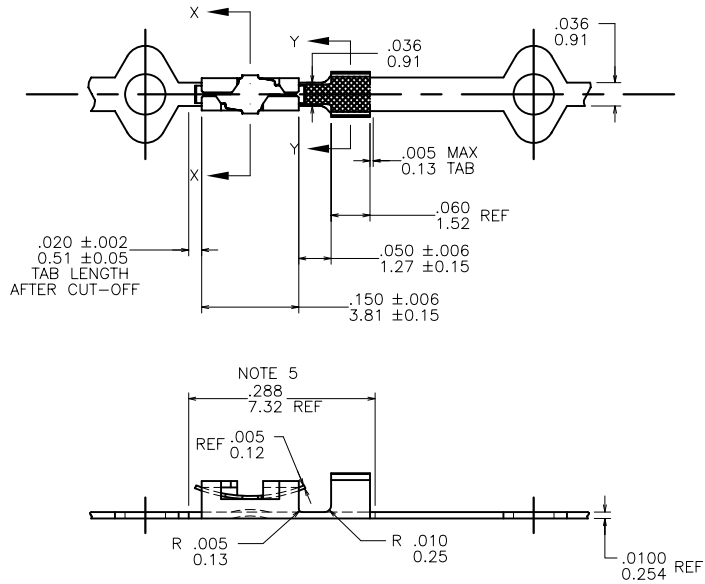
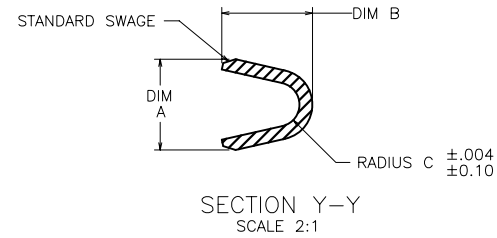
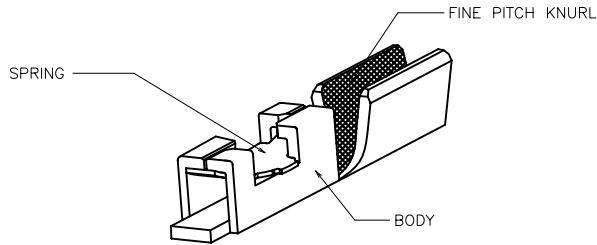


PRODUCT NUMBER  
SEE TABLE



mat'l. code SEE NOTE 1				surface <input checked="" type="checkbox"/> tolerance		projection	product family PV TERMINALS		
ltr	ec'n no	dr	date	tolerances unless otherwise specified		INCH/MM	title		
B	v61321	EPK	1996-10-14	angles	XX ±.01/X±.3		SCALE 4:1	MINI PV™ RECEPT. C.T.W. SHORT WIRE BARREL S/BUMP	
C	v05-0269	VS	2005-04-19		XXX ±.005/XX±.13	sheet 1 of 2			size A4
D	v06-0625	HTB	2006-07-05	0° ±2'	XXXX ±.0020/XXX±.051				
E	v08-0117	HTB	2008-04-10	dr	J. W. BAIR 1992-12-09	type			
				engr	T. HANNA 1992-12-09				
				chr	T. BREWBAKER 1993-07-27				
				appd	T. HANNA 1993-07-27				
sheet	revision	E	E						
index	sheet	1	2						



PRODUCT NUMBER	WIRE SIZE	WIRE BARREL			SPRING THICKNESS
		DIM A	DIM B	RADIUS C	
93135-001		O B S O L E T E			
93135-001LF	22-26 AWG	.070/1.78	.070/1.78	.017/0.43	.0048/0.122
93135-002		O B S O L E T E			
93135-002LF	28-32 AWG	.054/1.37	.058/1.47	.011/0.28	.0048/0.122
93135-003		O B S O L E T E			
93135-003LF	22-26 AWG	.070/1.78	.070/1.78	.017/0.43	.0035/0.089
93135-004		O B S O L E T E			
93135-004LF	28-32 AWG	.054/1.37	.058/1.47	.011/0.28	.0035/0.089
93135-005		O B S O L E T E			
93135-005LF	22-26 AWG	.070/1.78	.070/1.78	.017/0.43	.0065/0.165
93135-006		O B S O L E T E			
93135-006LF	28-32 AWG	.054/1.37	.058/1.47	.011/0.28	.0065/0.165

NOTES:

- ①. BODY MATERIAL: 1/4 HARD BRASS  
 BODY PLATING: 30μ"/0.76μ Au OVER 50μ"/1.27 Ni  
 IN CONTACT AREA, REMAINDER Au FLASH.  
 SPRING MATERIAL: BeCu HEAT TREATED  
 SPRING PLATING: Au FLASH
2. PART TO MATE WITH .025±.002/,.640±.050 SQUARE PIN.
3. APPLICABLE SPECIFICATIONS:  
 TA-75: CRIMP METHODS FOR USE IN MINI LATCH HOUSING EXCEPT NO BELLMOUTH FRONT OR REAR.
4. PART TO BE LUBRICATED TO FACILITATE CRIMPING.
5. MAX. BURR ANY EDGE .0032/0.081
- ⑥. BOTTOM SURFACE OF TERMINAL SHALL BE STRAIGHT WITHIN .003/0.08 OVER .288/7.32 REF LENGTH AS MEASURED ALONG DATUM LINE -E- ESTABLISHED AT CENTERLINE OF .054/1.37 DIA. PERFECT FORM NOT REQUIRED AT MMC.
7. PRODUCT MEETS EUROPEAN UNION DIRECTIVES AND OTHER COUNTRY REGULATIONS AS DESCRIBED IN GS-22-008.
8. THIS PRODUCT IS NOT INTENDED TO BE EXPOSED TO MANUFACTURING SOLDERING PROCESSES.

mat'l. code		surface		tolerance		projection		product family	
SEE NOTE 1		✓						PV TERMINALS	
ltr	ecn no	dr	date	tolerances unless otherwise specified				title	
E				angles	$.XX \pm .01/XX \pm 3$ $.XXX \pm .005/XXX \pm 13$	INCH/MM scale 1:1		MINI PV™ RECEPT. C.T.W. SHORT WIRE BARREL S/BUMP	
				0° ±2'	XXXX ±.0020/XXX±.051			dwg no	
		dr	J. W. BAIR	1992-12-09				sheet 2 of 2 size	
		engr	T. HANNA	1992-12-09				93135 A4	
		chr	T. BREWBAKER	1993-07-27				type	
		appd	T. HANNA	1993-07-27				CUSTOMER Drawing	
sheet index	revision sheet								